



MATTISON PLACE





A perfect compliment to the distinctive character of Fort Worth's thriving west side, Mattison Place presents a rare opportunity to create your own haven in the heart of the city.

At Mattison Place, great care has been taken to create an environment of serenity and style. Artfully designed with

an eye to scale and a feel for subtlety, these seven meticulously crafted Spanish Revival garden homes will soon comprise one of the

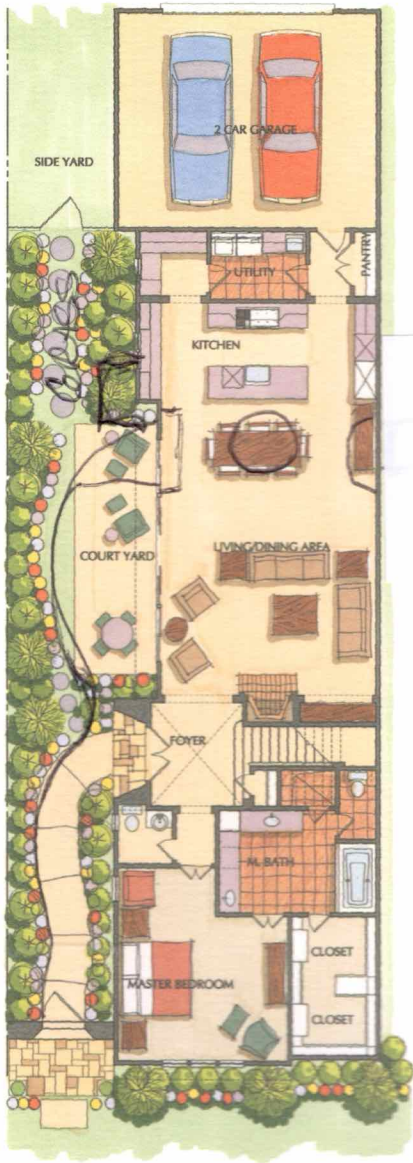
most indelible streetscapes in the city. Curiosity gives way to astonishment as one first discovers the lushly landscaped private



garden which bids a soothing welcome to the home. Ivy covered stucco walls frame the courtyard with a sense of indoor refuge,

while elegant casement windows and gliding French doors invite the beauty and tranquility of the garden into each room of the home.

Finely appointed, spacious rooms and the main-level master suite accommodate a lifestyle of unsurpassed comfort and ease.



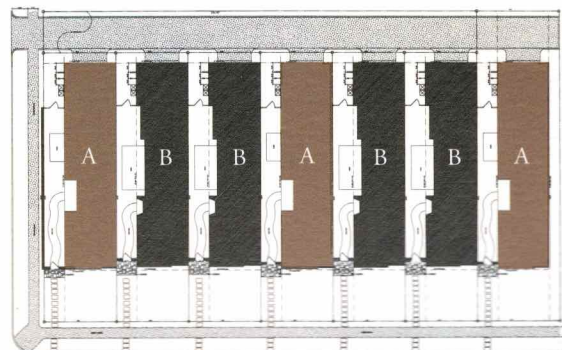
Plan B :: Garden Level
± 3,070 sq. ft.



Plan B :: Second Level

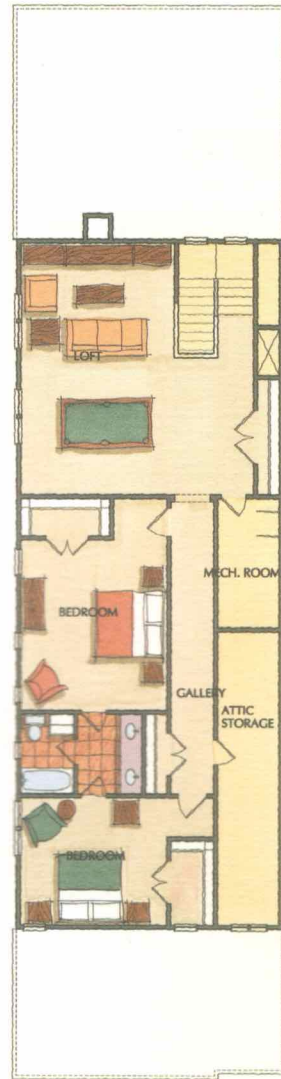
...the finest amenities of today.

- * Classically styled Marvin wood windows
- * Kohler plumbing fixtures
- * KitchenAid Architect Series appliances
- * Well-planned interiors and generous storage space





Plan A :: Garden Level
± 3,304 sq. ft.

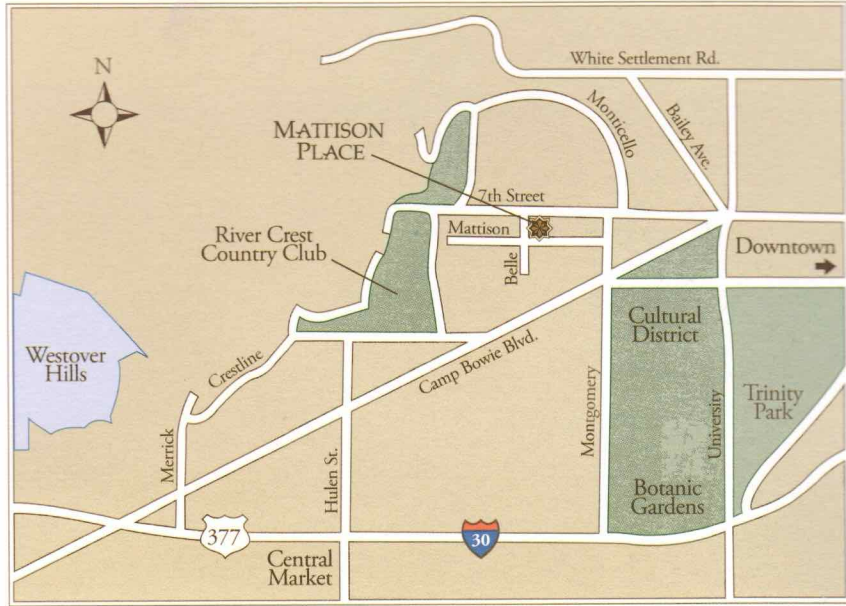


Plan A :: Second Level

The architectural integrity of yesterday...

- * Authentic hand troweled stucco and genuine clay tile roofing
- * Leaded stained glass accent windows
- * Ornamental wrought iron entry gate
- * Copper gas coach lanterns
- * Spanish tile accents

Spacious floor plans with entry-level master suite.



VH
VILLAGE HOMES

817.737.3377
www.homesofcharacter.com

